

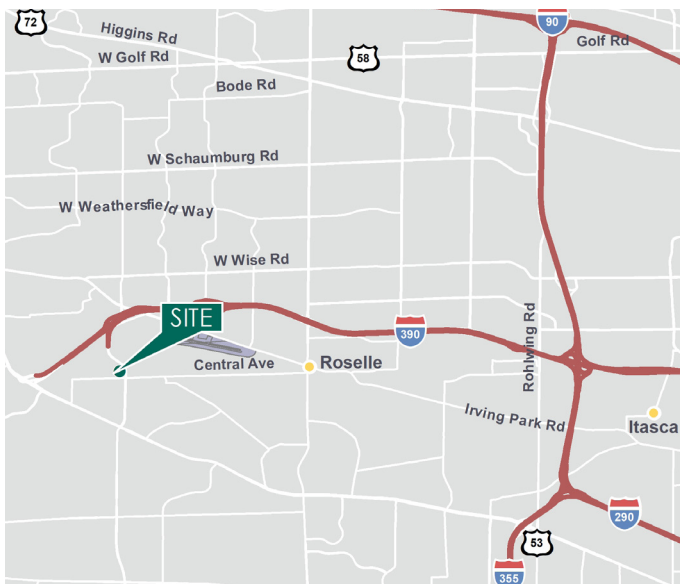
360,709 SF

Industrial Space For Lease



Prologis Roselle

1600 Central Avenue
Roselle, IL 60172 USA



LOCATION

- Easy access to I-390, Elgin/O'Hare Expressway
- Located in Turnberry Lakes in Roselle
- Easy access to O'Hare Airport

FACILITY

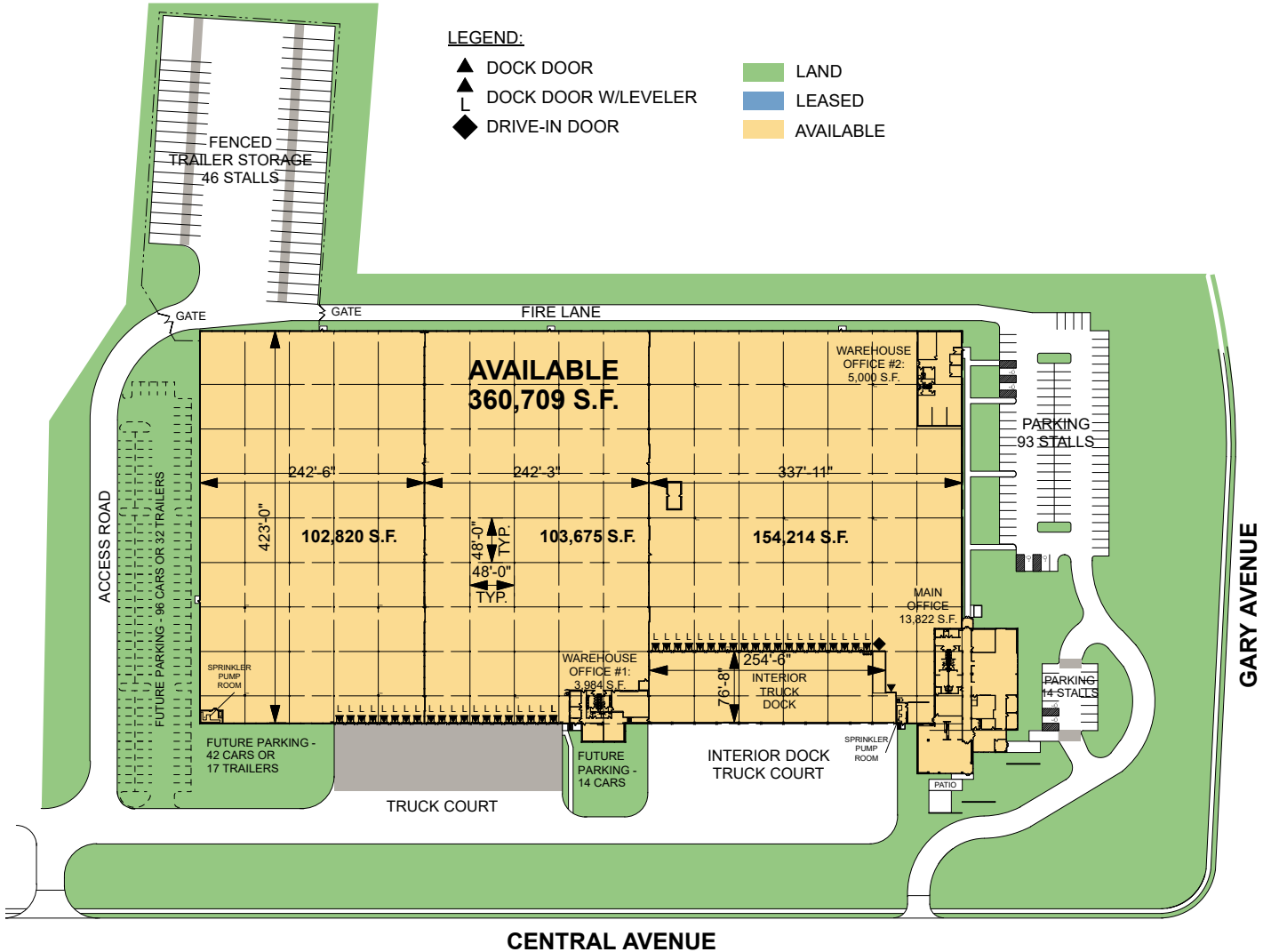
- 360,709 sf building available
- 13,822 sf main office
- 3,984 sf south warehouse office #1
- 5,000 sf north warehouse office #2
- 19.08 acre site
- 28' clear height
- 20 exterior docks
- 20 interior docks
- 1 drive-in door
- 107 car parking (expandable)
- 46 trailer spots
- 48' x 48' bay size
- 2500 amps@277/480 volts
- ESFR sprinkler system
- Available 8-1-2020

ADVANTAGES AND AMENITIES

- Corporate industrial building
- Excellent visibility on Central Avenue / Gary Avenue
- Excellent loading and trailer parking
- Low DuPage County Taxes

360,709 SF

Industrial Space For Lease



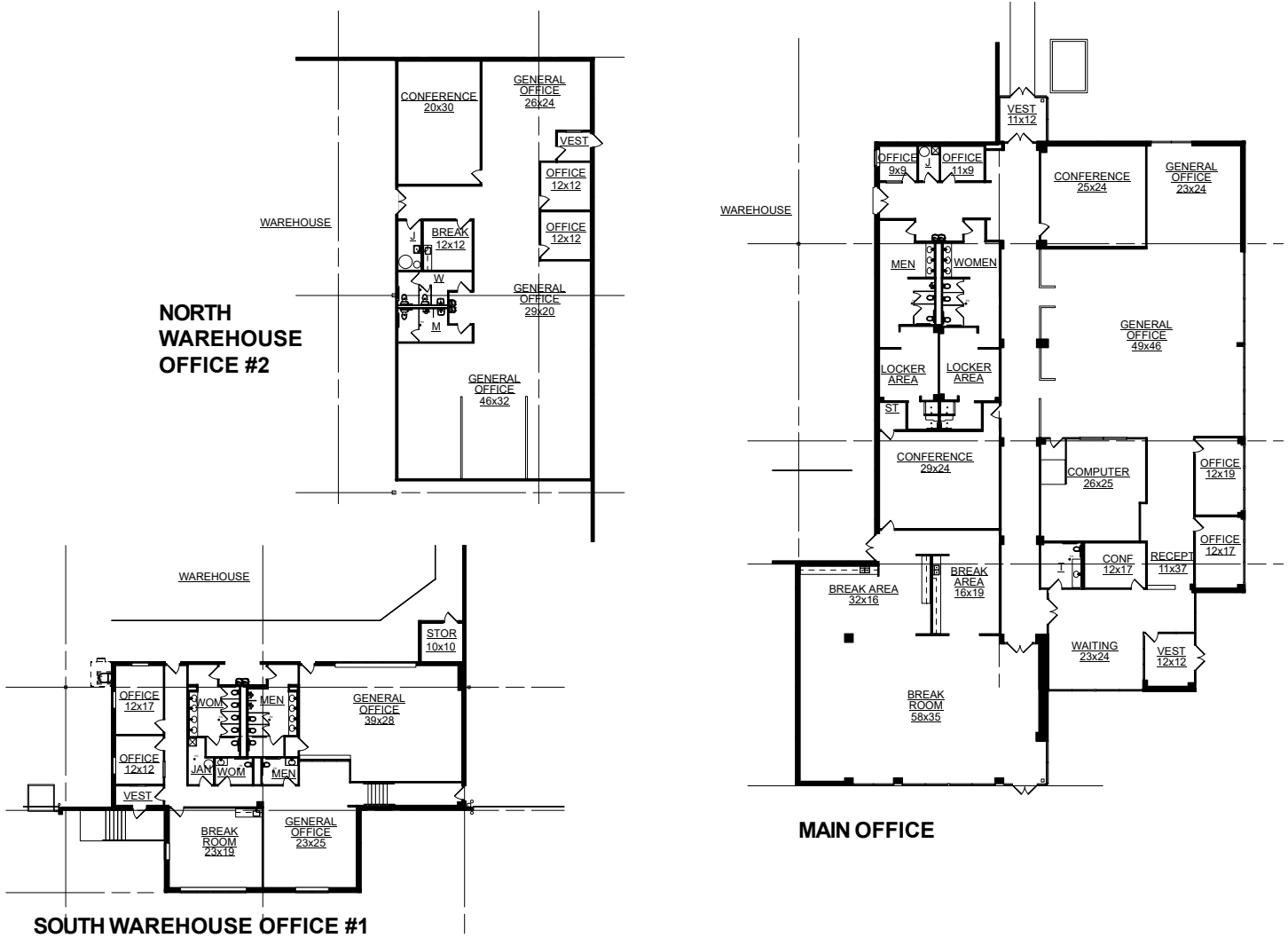
Ron Behm, SIOR
ron.behm@colliers.com
+1 847 698 8210
6250 N. River Road
Suite 11-100
Rosemont, IL 60018

Jonathan Kohn
jonathan.kohn@colliers.com
+1 847 698 8279
6250 N. River Road
Suite 11-100
Rosemont, IL 60018

Prologis
Maggie Tullier
mtullier@prologis.com
+1 847 292 3943
6250 N. River Road
Suite 1100
Rosemont, IL 60018

360,709 SF

Industrial Space For Lease



Ron Behm, SIOR
ron.behm@colliers.com
+1 847 698 8210
6250 N. River Road
Suite 11-100
Rosemont, IL 60018

Jonathan Kohn
jonathan.kohn@colliers.com
+1 847 698 8279
6250 N. River Road
Suite 11-100
Rosemont, IL 60018

Prologis
Maggie Tullier
mtullier@prologis.com
+1 847 292 3943
6250 N. River Road
Suite 1100
Rosemont, IL 60018